



NEW6

Course Listing
2020

Contents

A Level Courses

Sociology	5
Geography	6
History	7
Classical Civilisations	8
English Literature	9
Religious Studies	10
Fine Art	12
Graphic Communication	13
3D Design	14
Photography	15
Applied Science	17
Biology	18
Health and Social Care	19
Sport	21
Music	23
Performing Arts	24
Business Studies	26
Mathematics	27
Information Technology	28

A Level Pathways

Arts	4
Design	11
Healthcare	16
Sport	20
Creative Arts	22
Enterprise	25

CAREER PATHWAYS AT NEW6

ARTS PATHWAY

History, Geography, Classics, Sociology, English Lit, RS

Leading to careers in...

Youth worker, , Advice worker, Higher education lecturer,
P , Secondary school teacher, Social researcher, Social worker,
Civil Service administrator, Family support worker, , Human
resour , P , Pr , Politics Law and more.

HEALTHCARE PATHWAY

Health and Social Care, Applied Science, Biology

Leading to careers in...

Midwife, Doctor, Nursing, Environmental health inspector, Educational welfare
, Manager, Pharmaceutical, Medical Product Sales Representative,
Doctor, Clinical Molecular Geneticist, Pharmacology, Marine Biologist,
Research Scientist, Geo Scientist, Hydrologist and more.

CREATIVE ARTS PATHWAY

Performing Arts, Music, Photography

Leading to careers in...

Music Technology, Musical Theatre, Teaching, Producing, Performing,
Acting, Performance Studies, Stage Managements, Dance, Acting, Directing,
Choreography, Stage management, Teaching, Singing, Vocal Coaching and more

DESIGN PATHWAY

Fine Art, Photography, 3D Design, Graphic Communication

Leading to careers in...

Fine Art, Ceramics, Textiles, Interior Designer, 3D Design, Graphic Designer,
Space Planner, Game Designer, CAD Technician, Automotive Engineer,
Animator, Illustrator, Video Editor, Motion Graphics Creator, App Designer,
Web Designer, Publishing, Weddings, Events and more.

SPORT PATHWAY

Sport, Applied Science, Biology

Leading to careers in...

Sports and exercise science, Sport business, Personal trainer, Sports massage,
Travel and tourism, Outdoor leisure, Uniformed public services, Leisure
centre assistant, Gym instructor, School sport coach, Fitness instructor,
Personal trainer, Lifeguard and more.

ENTERPRISE PATHWAY

Business Studies, Information Technology, Maths

Leading to careers in...

Marketing, Accountancy, Sales, Human Resources, Public Relations, Event
Management, Finance, Project Management, Entrepreneur, Computer
Programming, App Design, Robotics, Ar , Data analysis,
Chartered accountant, Corporate investment banker and more

These pathways have been created to enable you to access a range of career pathways. However, if you wish to choose subjects across more than one pathway that too, .



ARTS

PATHWAY

Arts

Sociology

Course Details

Studying Sociology at A level will provide you with the answers to these questions and many more about the society you live in today.

Everyone is part of society. Society has helped shape who you are and how you experience life, but how much do you understand about it?

High crime rates in our inner cities, boys' underachievement in school, the effects of divorce on children, racism and the police, the effects of the media on violent behaviour, these are among the great debates of today. They are the subject of countless views and opinions, many of which are ill-informed or prejudiced, most expressed simply from personal and often very limited experience.

This is where Sociology comes in, because these are all social issues. The Sociologist sets off to try and understand our human world a little better. This task is often challenging and controversial, but to many it is also fascinating and rewarding. Sociology, then, is the study of people in society

By learning how society operates you will be learning how the world works, you will be putting your current life in context and preparing yourself for what society may have in store for you, you will gain the knowledge, analytical and debating skills to add your voice to the great popular discussions of our time in areas such as the family, education, the police/judiciary, the media, religion and politics.

The course has been designed to give learners the knowledge, understanding and skills necessary to become Sociologists. Through the study of dynamic and contemporary content, learners can understand and interact with social problems which affect people and society. It looks at four separate but linked areas of sociological study. These areas include Families and Households, Education with Theory and methods, Crime and Deviance and Beliefs in Society.

Entry Requirements

To study Sociology at A Level, learners need a passion for understanding the world we live in.

A level 5 in both English and Maths would be beneficial due to the essay and extended questions, which are integral to the course

Assessment Methods

The course assessed through three exams;

Paper 1 - Education with Theory and Methods in context - 2hour written paper (80marks)

Paper 2 - Topics within Sociology - Beliefs in Society and- 2 hour written paper (80marks)

Paper 3 - Crime and Deviance with Theory and Methods- 2hour written paper (80marks)

**For more information
please contact:**

Miss Barnett
cbarnett@onewa.co.uk

Progression Pathways

Youth worker
Charity officer
Advice worker
Higher education lecturer
Policy officer
Secondary school teacher
Social researcher
Social worker
Civil Service administrator
Family support worker
Housing officer
Human resources officer
Police officer
Probation officer
Public relations officer

Arts

Geography

Course Details

The OCR A Level in Geography has been designed to give learners the knowledge, understanding and skills necessary to become engaged global citizens. Through the study of dynamic and contemporary content, learners can understand and interact with issues which affect people and places at a range of scales from local to global – and all that is in-between. It looks at four separate but linked areas of geographical study.

The first is Physical Systems through which learners develop an understanding and appreciation of 'Coastal Landscapes' and the 'Earth's Life Support Systems', with the latter looking at the water and carbon cycles that are so vital to our planet.

Next is the Human Interactions section where learners study two units; 'Global Connections' which focuses on the systems of trade or migration around the world and 'Changing Spaces; Making Places' where learners gain an insight into the nature of places - how they change and how they are portrayed by people and the media.

The third focus is Geographical Debates and this allows teachers and learners to explore in depth two of the most challenging, dynamic and fascinating issues of the 21st century. Focusing on disease and tectonic hazards, these two units are taught through investigation and discussion.

Finally there is the Investigative Geography component which allows learners to undertake an independent investigation linked to any aspect of the course to satisfy their intellectual curiosity. This component is designed to encourage learners to deepen their knowledge and understanding of their chosen topic whilst developing a number of geographical and study skills relevant to Higher Education or within the world of work.

Entry Requirements

To study geography at A Level, learners need a passion for understanding the world we live in.

A level 6 or better in Geography at GCSE is desirable. In addition to this a level 5 in both English and Maths would be beneficial due to the essay and extended question, as well as the statistical work that are integral to the course.

Assessment Methods

The course assessed through three exams and an independent investigation.

- Physical systems - 1hr 30mins written paper (22% of total A Level)
- Human interactions - 1hr 30mins written paper (22% of total A Level)
- Geographical debates - 2hr 30mins written paper (36% of total A Level)
- Independent Investigation - coursework (20% of total A Level) that is completed during a five day residential field trip to Devon.

**For more information
please contact:**

Mr Petrie
spetrie@onewa.co.uk

Progression Pathways

Cartographer
Commercial/residential surveyor
Environmental consultant
Geographical information systems officer
Planning and development surveyor
Secondary school teacher
Town planner
International aid/development worker
Landscape architect
Logistics and distribution manager
Market researcher
Nature conservation officer
Sustainability consultant
Tourism officer and Transport planner

Arts History

Course Details

1C The Tudors: England, 1485–1603
2Q The American Dream: reality and illusion, 1945–1980
3X Non-examined Assessment: Free Choice 100 year study

You will study two examined units, the Tudors and USA and one written coursework.

The Tudors

Assesses students' understanding of breadth and of historical interpretations. Students learn about all the Tudor monarchs and complete an exam with three questions: a compulsory source question and answer two essays from a choice of three.

USA

This option provides for a study in depth of the USA at home and abroad as it emerged from the Second World War as a Superpower. For many Americans, post-war prosperity realised the 'American dream' but the prosperity was not shared by all and significant problems at home and abroad challenged the extent to which the 'American dream' was a reality. It explores concepts and ideas such as American identity at home and abroad, anti-communism, social equality, ethnic identities and federal versus states' rights.

Non-examined Assessment

Unit 3 is a Historical Investigation (non-exam assessment) which is based on a development or issue which has been subject to different historical interpretations. The Historical Investigation must:

- Be independently researched and written by the student
- Be presented in the form of a piece of extended writing of between 3000 and 3500 words in length
- Place the issue to be investigated within a context of approximately 100 years

Students can study a period of History of their own choice in the NEA.

Entry Requirements

To study History at A Level you should have at least a 5 in History, English Language or Literature. You do not need to have completed History GCSE to study A Level but you do need a good level of English.

Assessment Methods

A-level students must take assessments in all three of the following components in the same series:

- Component 1: Breadth study 40% (Tudors)
Component 2: Depth study 40% (USA)
Component 3: Historical investigation 20% (100 Year Study)

**For more information
please contact:**

Mrs Nicklin
anicklin@onewa.co.uk

Mr Peacock
ppeacock@onewa.co.uk

Progression Pathways

History is a key A Level facilitator subject and welcomed at top universities as one of your qualifications for entry.

History students have strong analytical and communication skills which can be put to good use in careers in business, finance, HR and law. They are welcomed in jobs such as:

Police
Social Care
Journalism
Marketing and Advertising
Teaching
Legal sector

Classical Civilisations

Course Details

The study of Classical Civilisations allows NEW students to time travel back to the ancient Greco-Roman world by exploring the legacies which have shaped literature, language, arts, politics and philosophy of the western world. Throughout this course, students will critically analyse, interpret and evaluate, using evidence to make substantiated judgements and produce coherent, reasoned arguments.

Not only do we listen to voices throughout history, we also implore all students to express themselves both orally and through written means as we believe that our students will shape the future.

Over the course of the qualification, students will study a diverse range of ancient material and make connections between them. Furthermore, students will also be taught how to articulate informed responses with substantiated evidence based judgements. By the end of Year 13, students will have acquired a sound basis for further study of the classical world.

The World of the Hero is a compulsory unit where students study Homer's Iliad and Virgil's Aeneid

Greek Theatre is the study of visual material culture and literature in translation

Greek Religion is the study of classical thought, along with either literature in translation or visual/material culture

Entry Requirements

GCSE English Language and/or Literature at a grade 5 or higher.

You must be passionate about literature and history and be prepared to fully immerse yourself into the course, both in and outside of lessons.

Assessment Methods

- 100% examination which will be sat at the end of Year 13.
- The examination will be split into 3 papers, which will each assess the 3 components taught throughout the course
- Weekly extended retrieval tasks
- On going extended writing

For more information
please contact:

Miss Whitehouse
gwhitehouse@onewa.co.uk

Progression Pathways

Museum archivist or curator
Law
Politics
Marketing & PR
Teaching
Fund raising campaign manager

Course Details

Term	Content:	Additional content:
Autumn 1	Unseen poetry: Diachronic approach to poetic movements/ contextualisation. Subject terminology: poetic forms/conventions. Homework: tasks set on Blogger. Key critical text: On Poetry by Glyn Maxwell.	Unseen prose: Diachronic approach to Literary movements. Subject terminology: literary analysis. Homework: analysis of extracts.
Autumn 2	Text: Othello Understanding the conventions of drama. Shakespeare's place within the canon. New Historicist literary approach to the play. Close textual analysis. Homework: essays to be individually and collaboratively planned on Blogger.	Text: The Great Gatsby The conventions of modernist literature. Context: The Jazz Age/post war literature & culture. Close textual analysis. Strategies for synthesis. Homework: essays.
Spring 1	Texts: The Handmaid's Tale & Feminine Gospels Targeted intervention for Othello. Introduction to dystopian literature. Cultural context: America in the 1980s. Critical approaches: feminism/postmodernism/new historicism. Comparative analysis/synthesis of the two texts. Homework: poetic analysis/ essay planning.	Text: A Streetcar Named Desire Conventions of contemporary Drama Social and historical context Character analysis/exploration of themes. Critical approaches: gender studies/new historicism. Homework: essay practice.
Spring 2	Continuation of Spring 1	Continuation of Spring 1
Summer 1	Text: Frankenstein (selected students) Social and historical context of 18 th / 19 th Century. Conventions of Gothic literature and associated terminology. Literary allusion and intertextuality.	Text: Dracula Social and historical context of 19 th Century. Conventions of Gothic literature and associated terminology. Literary allusion and intertextuality.
Summer 2	Academic essay writing workshops. Drafting NEA.	Meeting the assessment objectives workshops. Drafting NEA.

Entry Requirements

A minimum of five GCSEs including grade 5 in GCSE English and a 6 in English Literature.

A genuine love of Literature and reading in general.

An open, enquiring mind.

Assessment Methods

Examined units:

A pre-1900 poetry collection
Modern texts to include: A Streetcar Named Desire, Feminine Gospels & The Handmaid's Tale
The Great Gatsby
Othello
Unseen poetry and prose

Coursework (NEA)

An extended comparative literature essay (texts to be chosen by student and approved by teacher).

For more information
please contact:

Miss Roberts
eroberts@onewa.co.uk

Progression Pathways

Degree courses in:

English literature
Creative and professional writing
Media studies

Careers in:

Teaching
Publishing
Public speaking
Writing poetry
Prose
Drama

Religious Studies

Course Details

This course offers a range of faith-specific options, ensuring students have a thorough understanding of diverse philosophical and ethical viewpoints.

The course features a variety of relevant and contemporary themes, to help inspire engaging classroom discussion. Students will also gain critical and evaluative skills sought after by higher education and employers.

A Level Religious Studies is an exciting opportunity to explore the big questions such as:

- Can we prove the existence of God?
- Did God create the universe?
- Can we account for the presence of evil in the world?
- Is it possible to experience God?
- Do miracles happen?
- Can we talk meaningfully about God?
- How do we make ethical decisions about issues such as crime and punishment, euthanasia, lying, abortion and how we treat animals?

Entry Requirements

Grade 5 or above in English Language
Grade 5 or above in a Humanities subject

The most important thing is to be honest with yourself about whether or not you can cope with the demands of this course. You will need to be prepared to:

- Do LOTS of reading in your own time!
- Write A LOT!
- Take part in discussions!
- Work with others!
- Listen, make notes, take part and ask questions!

Assessment Methods

2 x written exams (2hr Philosophy and Ethics worth 67% of AS and 1hr Study of Religion worth 33% of AS)

2 x written exams (3hr Philosophy and Ethics worth 50% of A level and 3hr Study of Religion and Dialogues worth 50% of A level)

**For more information
please contact:**

Mrs Clarke-Edmunds
kclarke@onewa.co.uk

Progression Pathways

Higher education
Law
Education
Social work
Politics
Medicine
Administration
Media



NEW Academy

ption





DESIGN

PATHWAY

Design Fine Art

Course Details

The A Level Fine Art course is a two year course and is structured as follows;

Component 1 - Personal investigation.

(No time limit / 96marks / 60% of overall mark.)

Component 2 - Externally set task.

Preparatory period & 15 hour exam. (96marks / 40% of overall mark)

Students are required to conduct a practical personal investigation, into an idea, issue, concept or theme, supported by written material. The focus of the investigation must be identified independently and must lead to a finished outcome or a series of related finished outcomes. The investigation should be a coherent, in-depth study.

Work will be sketchbook based in a range of media including 2D and 3D materials. Throughout the course students will;

- Appreciate and learn about different styles of Art and examine cultural & historical influences.
- Be creative and develop their own work.
- Develop observational drawing skills and learn new painting techniques
- Work with a range of different media including, pencil, pastel, paint, clay, printmaking & computer manipulation.

Entry Requirements

Students will be required to have achieved a Grade 5 or above in GCSE Art, in order to undertake further study at 'A' Level. They will also need a Grade 4 or above in English due to the written element of the course.

Students will need to have a commitment to attending lessons regularly, working independently and producing the innovative, high quality Artwork that is required at 'A' Level. They should be able to investigate artists and crafts people in depth and use their findings to inform the development of their own work and style.

Assessment Methods

- A 15 hour exam at the end of year 2 of the course.
- All work over the two years also be assessed regularly on an internal basis plus moderated externally by the AQA Examiner at the end of the second year.
- Grading for the course is on a six point scale = A* - E

**For more information
please contact:**

Mrs Swift

lswift@onewa.co.uk

Miss Bryan

wferrigon-bryan@onewa.co.uk

Progression Pathways

Successful completion of the 'A' Level Art course could lead to acceptance on Foundation and Degree Level courses e.g.

Fine Art
Ceramics
Textiles
Interior Design
3D Design
Graphic Design

Design

Graphic Communication

Course Details

This course gives students an understanding of how ideas, feelings and meanings can be conveyed and interpreted in images and artefacts created. They will pick an area of study where they will research existing products in order to develop their own. They will be taught drawing skill and a wide range of digital graphic skills both 2D and 3D.

Areas of study

Students are required to work in one or more area(s) of graphic communication, such as those listed below. They may explore overlapping areas and combinations of areas:

- interactive media (including web, app and game design)
- advertising
- packaging design
- design for print
- illustration
- communication graphics
- branding
- multimedia
- motion graphics
- design for film and television.

Entry Requirements

A minimum of five GCSEs A* - C including art/graphics or a BTEC Introductory qualification in Art, Design and Media.

Assessment Methods

Component 1: Personal Investigation (60% of marks)

No time limit

96 marks—Set and marked by the centre

Component 2: Externally Set Assignment (40% of marks)

Preparatory period + 15 hours supervised time

96 marks—Set by AQA

For more information
please contact:

Miss Gillett
dgillett@onewa.co.uk

Progression Pathways

Graphic Designer
Game Designer
Marketing
Advertising
Animator
Illustrator
Video Editor
Motion Graphics Creator
App Designer
Web Designer

Design

3D Design

Course Details

You will develop a broad overview of how to generate, develop and communicate ideas in 2 and 3 dimensions. During the course you will create sketchbook/journals which will include your research, planning, evaluation and development of ideas. Students also produce 3D models and a finished portfolio of work.

Students participate in gallery visits, exhibitions and workshops delivered by visiting architects.

Areas of study

Students are required to work in one or more area(s) of three-dimensional design, such as those listed below. They may explore overlapping areas and combinations of areas:

- ceramics
- sculpture
- exhibition design
- design for theatre, television and film
- interior design
- product design
- environmental and architectural design
- jewellery/body ornament
- 3D digital design

Entry Requirements

A minimum of five GCSEs A* - C including art / product design or a BTEC Introductory qualification in Art, Design and Media.

Assessment Methods

Component 1: Personal Investigation (60% of Year 2 marks)

No time limit

96 marks—Set and marked by the centre

Component 2: Externally Set Assignment (40% of Year 2 marks)

Preparatory period + 15 hours supervised time

96 marks—Set by AQA

For more information
please contact:

Miss Gillett
dgillett@onewa.co.uk

Progression Pathways

Architect
Interior Designer
Space Planner
Game Designer
CAD Technician
Automotive Engineer
Product Designer
Furniture Designer

Design Photography

Course Details

Photography is an exciting industry where no two days can be the same. You can work on briefs for a client's new product or be whisked off to a wedding for the day. You could decide to specialise in journalism and showcase your photos with the latest breaking news. The photography industry comprises of almost 14,000 companies in which 50% are freelance photographers.

What will I do on the course?

The course will enable students to explore photography practices including digital techniques, studio techniques and various camera techniques, and apply these skills both with an artistic sense and that of more commercial needs, such as in advertising, PR and journalism.

Areas of study

Students are required to work in one or more area(s) of photography, such as those listed below. They may explore overlapping areas and combinations of areas:

- portraiture
- landscape photography (working from the urban, rural and/or coastal environment)
- still life photography (working from objects or from the natural world)
- documentary photography, photojournalism
- fashion photography
- experimental imagery
- multimedia
- photographic installation
- moving image (video, film, animation)

Entry Requirements

A minimum of five GCSEs A* - C including photography/art or a BTEC Introductory qualification in Art, Design and Media. An interest in and/or experience of photography is useful but not essential.

Assessment Methods

Component 1: Personal Investigation (60% of marks)

No time limit

96 marks—Set and marked by the centre

Component 2: Externally Set Assignment (40% of marks)

Preparatory period + 15 hours supervised time

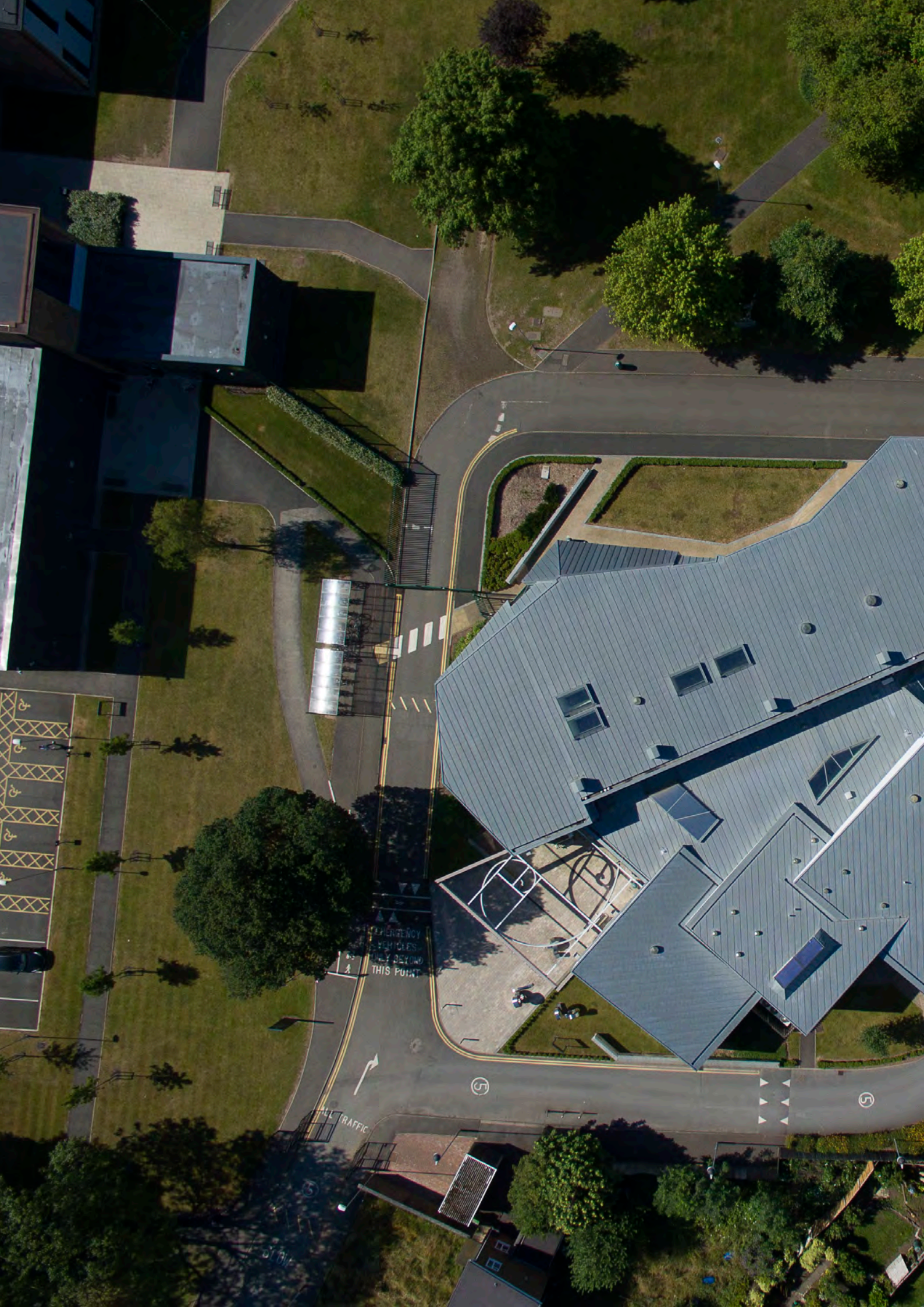
96 marks—Set by AQA

For more information
please contact:

Miss Gillett
dgillett@onewa.co.uk

Progression Pathways

Photographer
Advertising
Fashion
Journalism
Publishing
Weddings
Events



EMERGENCY VEHICLES ONLY BEYOND THIS POINT

STAY

TRAFFIC

Handicapped parking spaces marked with yellow diagonal lines

5

5

HEALTHCARE

PATHWAY

Healthcare Applied Science

Course Details

The AQA level 3 qualification in Applied Science has been designed in order to provide learners with the knowledge, understanding and skills necessary to progress to a higher education environment and or pursue a career in the applied science sector.

This qualification will provide learners with a broad understanding of all three sciences in order to support progress to higher education, you will be focusing mainly on the scientific principles associated with the application of Biology, Chemistry and Physics, experimental and practical techniques associated with applied science, the roles and skills of scientists, and the public and media perception of science.

Key concepts in science will involve studying the principles of science, in depth, following topics such as Cell Structure, Atomic Structure and Energy.

Applied experimental technique will introduce learners to new experimental techniques and reinforce methods met previously so students will be able to apply these methods to new situations.

There are also 3 optional modules available throughout this course each covering the applied nature of the three sciences. Students must select one of these optional modules. These include Microbiology which aims to cover the Biotechnology industry, Medical Physics which covers routes to Medical careers and how Physics is essential and finally Organic Chemistry which provides an insight into the practical synthetic methods that are available to preparative chemists.

Entry Requirements

To study Level 3 Applied Science, learners will re-quire a strong passion for wanting to understand how science can effect the world around us.

A level 4 or better in Science at GCSE is desirable. In addition to this a level 4 in both English and Maths would be beneficial due to the formula, calculations and written work that are all integral to the course.

Assessment Methods

The course will be assessed through three written exams as well as portfolio work

- Each unit will be graded as Pass, Merit or Distinction
- With the overall qualification being graded as Pass, Merit, Distinction or Distinction*
- Each unit will be worth 16.6% of the total qualification with learners being required to pass each individual unit to acquire the qualification

**For more information
please contact:**

Mrs Hill
shill1@onewa.co.uk

Progression Pathways

Biochemist
Biophysicist
Chemist
Conservationist
Environmental Scientist
Technician
Forensic Scientist
Geo Scientist
Hydrologist
Medical Scientist
Science Teacher
Doctor
Clinical Molecular Geneticist
Pharmacology
Marine Biologist
Research Scientist
Material Physicist
Astrophysicist
Chemical Engineer
Toxicologist

Healthcare Biology

Course Details

The AQA Biology course has been designed to provide numerous practical experiences to link theory to reality and equip students with the essential knowledge and practical skills they need.

The course includes;

- 3.1 Biological molecules
- 3.2 Cells
- 3.3 Organisms exchange substances with their environment
- 3.4 Genetic information, variation and relationships between organisms
- 3.5 Energy transfers in and between organisms (A-level only)
- 3.6 Organisms respond to changes in their internal and external environments (A-level only)
- 3.7 Genetics, populations, evolution and ecosystems (A-level only)
- 3.8 The control of gene expression (A-level only)

Practical work is at the heart of biology, carrying out the 12 required practicals means that students will have experienced use of each of these apparatus and techniques. Practical assessments have been divided into those that can be assessed in written exams and those that can only be directly assessed whilst students are carrying out experiments.

A-level grades will be based only on marks from written exams.

A separate endorsement of practical skills will be taken alongside the A-level. This will be assessed by teachers and will be based on direct observation of students' competency in a range of skills that are not assessable in written exams.

Entry Requirements

A level 5 or better in Biology at GCSE is desirable for separate science students. Alternatively a minimum of 6-6 is required from combined science students. In addition to this a level 5 in both English and Maths would be beneficial due to the essay and extended question, as well as the statistical work that are integral to the course.

Assessment Methods

The course is assessed through three exams:

- Year 1 content - 2hr written paper (35% of total A Level)
- Year 2 content - 2hr written paper (35% of total A Level)
- Synoptic exam - 2hr written paper (30% of total A Level)

**For more information
please contact:**

Mrs Hill
shill1@onewa.co.uk

Progression Pathways

Biological Technician
Biochemist
Genetic Counsellor
Health Communications Specialist
Health Educator
Physician Assistant and Nurse
Practitioner
Medical and Health Services
Manager
Pharmaceutical
Medical Product Sales
Representative

Healthcare

Health and Social Care

Course Details

Overview

This is an Applied General qualification that is designed for learners aged 16-19 who want to study health and social care where they can learn and be assessed in ways that are practical and relevant to the health and social care sector. It is designed to give learners the transferable knowledge and skills to progress to higher education or further study.

Courses available

Pearson BTEC Level 3 National Extended Certificate in Health and Social Care (360 GLH) 601/7197/2

Pearson BTEC Level 3 National Diploma in Health and Social Care (720 GLH) 601/7194/7

Units to be covered

- Human Lifespan Development
- Working in Health and Social Care
- Anatomy and Physiology for Health and Social Care
- Enquiries into Current Research in Health and Social Care

These units will offer learners the opportunity to explore the roles of professional and workers within the health and social care sector. They will lay the foundations of knowledge for progression into the sector. Identifying the rights all individuals have, whether a worker or service user, and the laws and legislation in place for protection.

Entry Requirements

To be eligible for this course you will need 5 GCSE grades at A-C including:

- English
 - Health and Social care
- and / or
- Child Development

Assessment Methods

This qualification is assessed using coursework and examinations (January and June sittings).

Coursework is externally moderated.

For more information
please contact:

Mrs Clarke
lclarke@onewa.co.uk

Progression Pathways

Educational:

Apprenticeships

University

Further qualifications in the health
Social care sector

Job progressions:

Social worker

Teaching

Midwife

Doctor

Cqc inspector

Nursing

Educational officer

Environmental health inspector

Safeguarding officer

Educational welfare officer

SPORT

PATHWAY

Sport Sport

Course Details

This qualification is not just about playing sport; it will provide learners with the skills, knowledge and understanding to progress into higher education on a sports related programme.

The Sport BTEC Level 3 programme enables you to learn about the theory behind sport in great depth. You will have the opportunity to explore anatomy and physiology, sports coaching, nutrition, fitness and testing and business in sport. You will gain experience for use in the workplace or as a stepping stone to higher education. The variety of subjects will enable you to study most areas of sport and will help you decide which field you wish to work towards.

BTEC Level 3 Nationals Sport courses offer a flexible range of qualifications that can be studied alongside other level 3 qualifications such as A levels or other BTEC Nationals as part of a larger programme of study, or as the main focus of study. They are designed for Post-16 Level 3 learners wishing to go on to further or higher level study of the sector or directly to employment.

Entry Requirements

4 A* to C or equivalent

Assessment Methods

Coursework (both written and practical work) and External Exams.

**For more information
please contact:**

Mr Weston
mweston@onewa.co.uk

Progression Pathways

Learners may progress into a wide variety of health and fitness or sport based careers. It is also a progression route to sports courses at higher education, including sport analysis, sports management or sports studies.

CREATIVE ARTS

PATHWAY

Creative Arts

Music

Course Details

This two year course aims to provide you with the skills needed to succeed in the music industry or progress to Higher Education.

You will be encouraged to widen your musical horizons through performance, composition, instrumental, recording and theoretical skills.

Units Studied

Unit 1—Practical theory and harmony— You will develop an understanding of the signs and symbols associated with notation of pitch, rhythm, tempo, dynamics and expression. You will develop an understanding of scales and chords through composition

Unit 2—Professional Practice in the Music Industry— You will develop your knowledge on the professional skills that are important in the music industry.

Unit 3—Ensemble music performance— In this unit you will develop ensemble performance skills by taking part in rehearsals and a final performance.

Unit 5—Music performance session styles— You will explore a range of genres and styles through performance

These units are designed to support progression to more specialist music courses in higher education and to link with relevant occupational areas such as composition, business, technology and performance.

Entry Requirements

You must be able to play a musical instrument or be able to sing.

You must have a willingness to perform and develop theoretical knowledge.

GCSE level 5 or Level 1/2 BTEC Music at a grade Pass is desirable

Assessment Methods

This will take place at the end of each completed unit and end of the academic year for externally assessed units.

- Unit 1— Assessment will be through a written essay on the use of signs and symbols within music/ Composition of melodies and chord progressions and an arrangement of a piece of music.
- Unit 2—Controlled assessment on the music industry
- Unit 3— Ensemble Performance of three pieces from a set list
- Unit 5— An essay on three different styles of music followed by a performance of three pieces from these three styles.

**For more information
please contact:**

Mr Porter
mporter@onewa.co.uk

Progression Pathways

Higher Education:

Music
Music Technology
Musical Theatre

Careers:

Teaching
Producing
Performing

Creative Arts

Performing Arts

Course Details

Units Studied

Unit 1 - Investigating Practitioners' Work
Unit 2 - Developing Skills and Techniques for Live Performance
Unit 3 - Group Performance Workshop
Unit 4 - Performing Arts In The Community
Unit 5 - Individual Performance Commission
Unit 6 - Final Live Performance to an Audience
Unit 19 - Acting Styles
Unit 21 - Improvisation

These units will focus on enabling you to become a successful performer.

You will have the opportunity to experiment with a range of themes and genres of theatre including naturalistic theatre, Shakespeare and monologues. You will work closely with other students to develop your own productions and be responsible for the planning and organisation.

Your final Showcase

The final unit will be assessed through a live production viewed by an invited audience.

Entry Requirements

You must have a strong interest in performing arts along with 5 Pass level GCSE's including Performing Arts and/or English.

Assessment Methods

This will take place at the end of each completed unit and end of the academic year for externally assessed units. There will be opportunities to peer assess each other during rehearsal time.

For more information
please contact:

Mrs Smedley-Baugh
jsmedley-baugh@onewa.co.uk

Miss James
ijames@onewa.co.uk

Progression Pathways

Higher Education:

Music Theatre
Acting
Performance Studies
Stage Managements
Dance

Careers:

Acting
Directing
Dancing
Choreographing
Stage management
Teaching
Singing
Vocal Coaching



ENTERPRISE

PATHWAY

Enterprise Business Studies

Course Details

The Cambridge Technical qualifications in Business will encourage students to be inspired, moved and challenged by following a broad, coherent, satisfying and worthwhile course of study and gain an insight into related sectors. This Level 3 qualification will prepare students to make informed decisions about further learning opportunities and career choices.

This qualification enables students to:

- Actively engage in the study of business and economics to develop as effective and independent students and as critical and reflective thinkers with enquiring minds.
- Use an enquiring, critical approach to distinguish facts and opinions, to build arguments and make informed judgements
- Develop and apply their knowledge, understanding and skills to contemporary issues in a range of local, national and global contexts
- Appreciate the range of perspectives of different stakeholders in relation to business and economic activities
- Consider the extent to which business and economic activity can be ethical and sustainable.

**For more information
please contact:**

Mr Blower
mblower@onewa.co.uk

Mrs Flanagan
vflanagan@onewa.co.uk

Progression Pathways

Marketing
Accountancy
Sales
Human Resources
Public Relations
Event Management
Finance
Project Management
Entrepreneur

Entry Requirements

5 GCSE's at grades 9 to 5 or BTEC equivalent at Merit, including English and Mathematics

GCSE or equivalent is desirable but not mandatory.

Assessment Methods

60% Coursework, both written and practical work

40% Examination in finance. There are 10 units overall (7 compulsory and 3 optional)

Enterprise Mathematics

Course Details

Why carry on studying mathematics?

Studying Maths helps us find patterns and structure in our lives. Practically, Maths helps us put a price on things, create graphics, build websites, build skyscrapers and generally understand how things work or predict how they might change over time and under different conditions. Maths will change your future.

What will you study?

During the course you will study Pure mathematics (Including: Algebra, Trigonometry and Calculus) Mechanics (Forces, momentum, 2D and 3D motion) and Statistics (Averages, spread and working with large data sets using ICT).

Maths A level is a must have for degrees in: Physics, Engineering, Actuarial Science, Economics and, of course, Maths. It is recommended or sometimes required for: Computer Science, Accounting, Chemistry, Biology and Life Sciences, Medicine / Nursing, Dentistry, Business Studies, Management Studies, Finance, Architecture, Geology, Psychology, Surveying and even Philosophy.

Maths is also crucial for studying advanced apprenticeships in Accountancy and Technology and Engineering subjects.

Entry Requirements

Mathematics is a challenging subject at A Level. There is a strong correlation between the results obtained by pupils at GCSE and A Level. Consequently if you do not achieve a pass in GCSE Higher Tier Mathematics at Grade 7, 8 or 9 it would not be advisable to study mathematics at A Level. An A level Maths student should already have an excellent understanding of algebra and trigonometry, be proficient at sketching graphs and possess good problem solving attributes.

Assessment Methods

Examination	Content
Paper 1 2 hours	Pure Maths (100 marks) 33.3% (100 marks)
Paper 2 2 hours	Pure Maths 33.3% (100 marks)
Paper 3 2 hours	Statistics & Mechanics 33.3% (100 marks)

All assessments are linear and 100% examination. The course is split into two parts - Pure Mathematics and Applications (incorporating Statistics and Mechanics). The examinations, all taken at the end of Year 13:

Students are required to be assessed in problem solving, proof and modelling, as well as pre-release of a large data set.

For more information
please contact:

Mrs Matharu
smatharu@onewa.co.uk

Progression Pathways

Architect
Banking
Civil service
Financial services
Consulting
Retail
Computing
Aerospace engineer
Business analyst
Chartered accountant
Corporate investment banker
Insurance underwriter
Investment analyst
Meteorologist
Quantity surveyor
Software tester
Actuary
Forensic accountant
Research scientist
Secondary school teacher
Statistician
Stockbroker

Enterprise Information Technology

Course Details

The course covers a variety of IT skills which can equip students to move into a range of differing IT careers. There are different pathways which can be taken by students. The pathway choice dictates the units which students can choose:

IT Infrastructure Technician

This pathway focuses on the design, implementation and management of an organisation's IT Infrastructure. Plus, the activities and roles that are carried out in the workplace such as selecting hardware and software for clients, and learning how to build, upgrade or develop computer systems and networks that are safe and secure.

Emerging Digital Technology Practitioner

This pathway focuses on the use and development of virtual and augmented reality and emerging technologies for application across a range of sectors, to include: mobile technology and digital marketing.

Application Developer

This pathway focuses on the development of a range of applications across platforms and. Students will gain the right combination of knowledge, understanding and skills required for the 21st century, enabling them to demonstrate the skills of writing specifications, and designing, building and testing of applications.

Data Analyst

This pathway focuses on the data analytics business. Students will learn how organisations evaluate risks with data and analyse statistical information to determine whether they could accidentally damage business potential or identify opportunities to increase business potential.

The pathway(s) will be decided based on the skills and aspirations of the students that select to study the course.

Entry Requirements

Students will ideally have achieved a grade '5' or above in both Mathematics and English.

Students who have not previously studied Computer Science or ICT will be considered based on grades achieved in similar qualifications.

Assessment Methods

The qualification is assessed through a combination of written external examinations and internally assessed coursework units. The number of each is dependent on the pathway/units that are chosen.

For more information
please contact:

Mr Blower
mblower@onewa.co.uk

Progression Pathways

ICT Support
Network Manager
Game Design
Computer Programming
App Design
Robotics
Artificial Intelligence
Data analysis
Animation
Emerging Technologies
Marketing

GET IN TOUCH

CONTACT US

If you have any questions or would like more information about anything mentioned in this booklet, please contact us using the details below.



info@onewa.co.uk



01902 623 111



Marsh Lane, Wolverhampton, WV10 6SE



@newacad

ORMISTON NEW ACADEMY
EXCELLENCE THROUGH ENDEAVOUR



@newacad

[OAT]
Ormiston Academies Trust
AN OAT ACADEMY